

the new industrial revolution: packet radio and local area networking

"I see no reason why
intelligence may not be
transmitted instantaneously
by electricity."

— Samuel Morse, 1832

Because the traditional methods of point-to-point communications — CW and RTTY — relied on relatively low data rates, conventional systems have been slow to take advantage of available technologies and the bandwidths they offer. Yet the widespread use of digital computers has created an urgent demand for faster data transfer (burst communication) requiring large bandwidths giving a totally new meaning to Morse's words.

Now that personal computers have taken the place of comparatively "dumb" terminals, used to access large central computers (CPUs) via low-speed telephone lines, communication between and coordination of individual computers has presented a new and difficult challenge to system planners. Because there are differences between various computers, they have difficulty "talking" to each other, and problems are created whenever they are combined in a common network. In order to solve this problem, a new science, called LAN or *Local Area Networking*, was created, which employs packet-like communications to transmit data on dedicated wire (pairs), coaxial cables, fiber optics or "through the air" (see **fig. 1**).

The need for wideband communications has also affected traditional analog modulation schemes, which are now being replaced by digital ones. The search

is on for techniques that will enable diverse types of electrical information — including voice and video signals — to be combined and transmitted. At the same time new higher speed analog-to-digital converters are replacing conventional processing techniques not only in RF processors but in large distributed networks and private branch exchanges (PBX). In addition, compressed full-motion digital television signals, including digital voice and computer information, can be distributed over networks for video-conferencing.

This phenomenon is not a science fiction fantasy, but rather a reality of the new industrial revolution, in which information is managed through automatic communications between and among "intelligent" machines.

As an example, consider a corporation with several manufacturing facilities in widely separated locations. Each factory acts as an independent unit with its own offices and production facilities. To operate effectively and maintain the competitive edge, each unit needs to have, at hand, easy access to the latest technology and techniques of information processing and communications. The answer to this need is a series of interconnected local area networks designed to instantly respond *electronically* rather than on paper.

communication path determines technique used

Most data communications over paths shorter than one hundred meters employ (hard-wired) parallel busses (see **figs. 2 and 3**.) Although this relatively fast method of data transfer is fully compatible with computer I/O's, use of busses over greater distances becomes impractical. Consequently, local area networks use serial digital packet formats at rates in the 50 Mbit/s range.* In communications this is referred to

By Cornell Drentea, WB3JZO, 7140 Colorado Avenue N., Minneapolis, Minnesota 55429

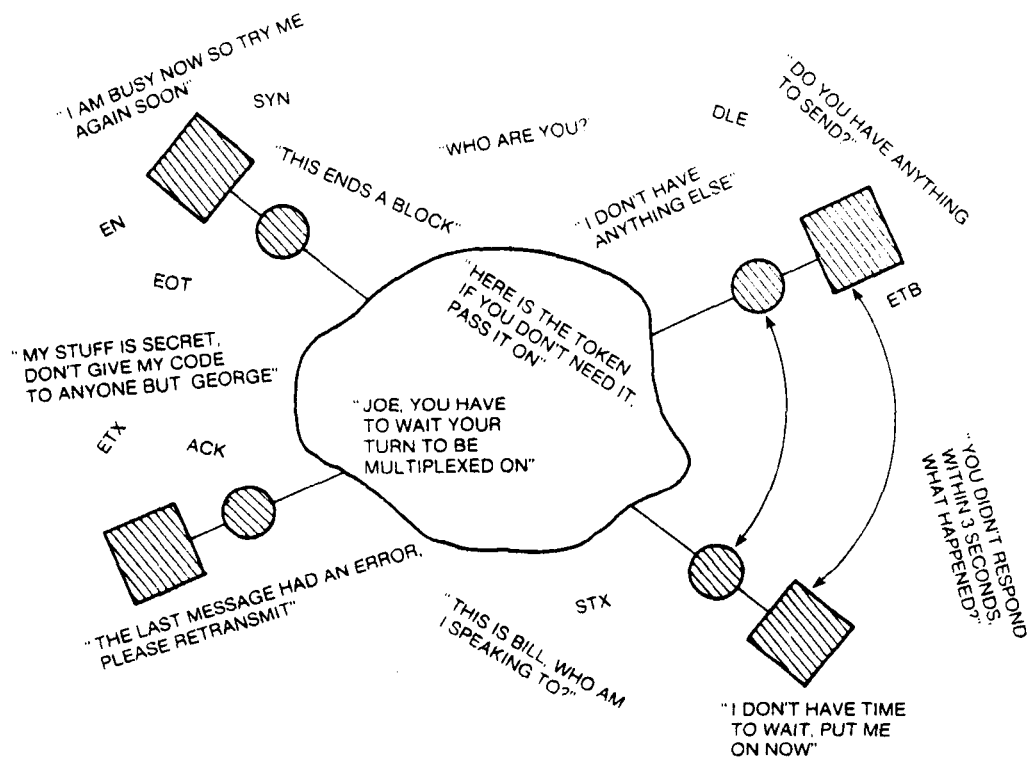


fig. 1. Some protocol requirements for local area networks.

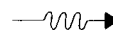
as base-band information because it is the basic format that every device will eventually generate and accept for communications. Base-band can be used directly in point-to-point communications between data devices such as universal asynchronous receiver/transmitters (UART). However, without complex protocols and equipment, only two devices can communicate over the given medium at a given moment. For communication among more than two devices (e.g., computers), other methods must be used.

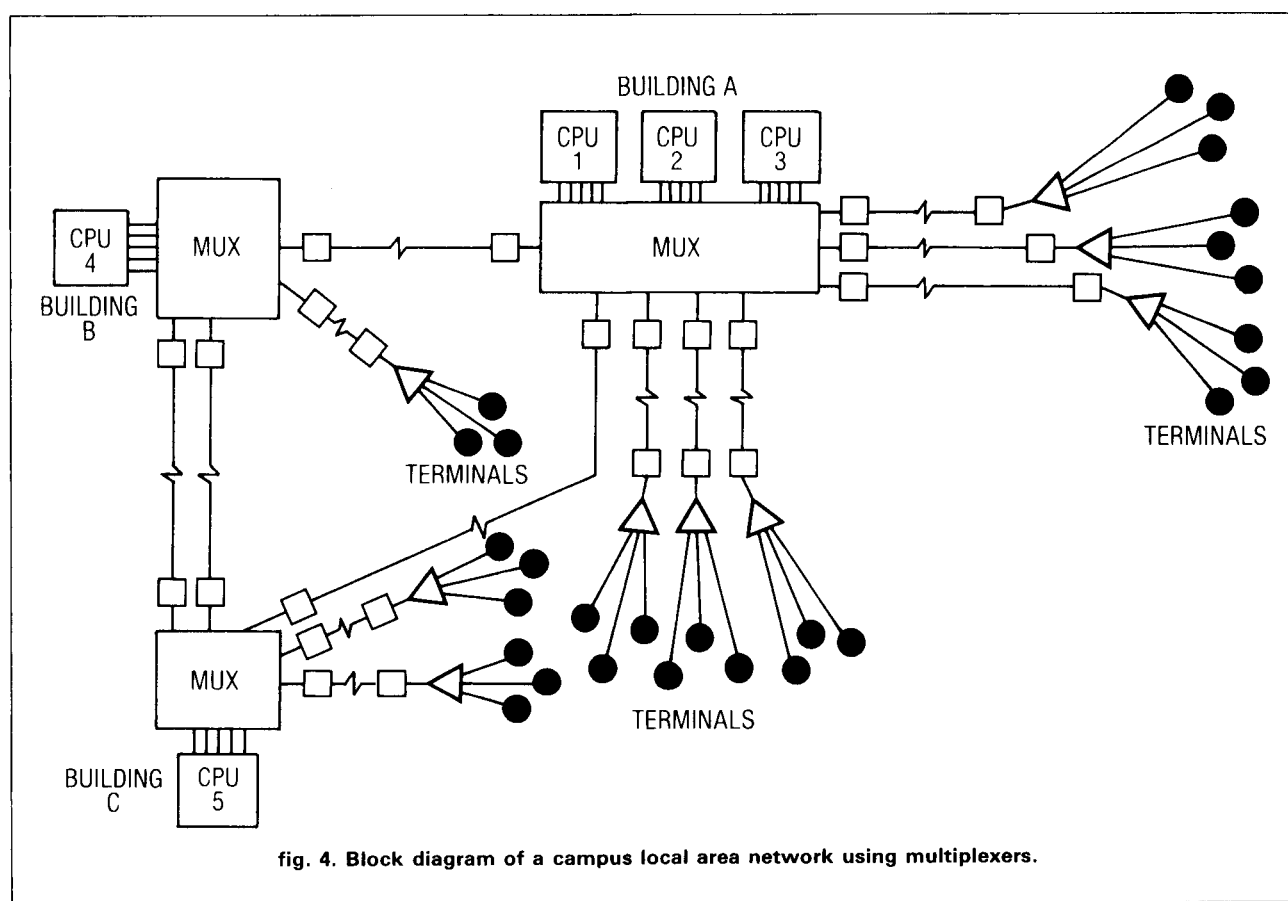
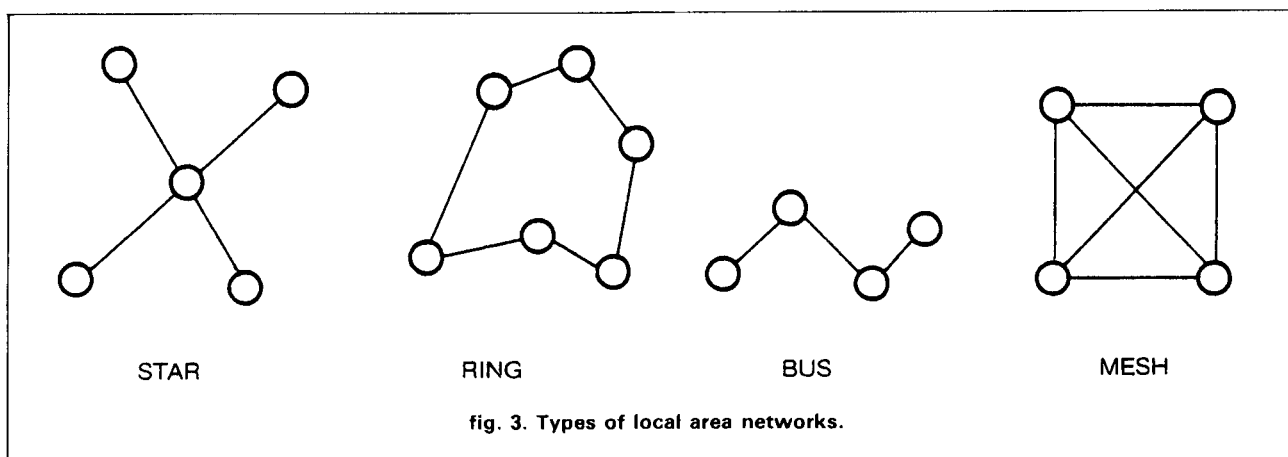
One method of communicating between several digital base-band devices over the same pair of wires is by multiplexing them synchronously at both ends. Known as time division multiplexing (TDM), this represents an early form of local area networks, as shown in fig. 4. TDM uses permanently dedicated time slots that can sometimes be "empty" of information; *statistical* time-division multiplexers (STATDM) eliminates this problem by dynamically allocating the time slots according to the activity on the channels.

- **Computer Bus:**
1-10 cm to 100 meters.
- **Local Area Nets:**
Several meters to several kilometers.
- **Local Distribution Nets:**
A few kilometers to approximately 100 kilometers.
- **Long Haul Nets:**
Hundreds of kilometers to thousands of kilometers.

fig. 2. Categorization of networks by geography.

*Packet is a block of data handled by a network in a well-defined format including a header (opening ID) and having a maximum size and data field. Consequently, a message may have to be carried as several packets.





Other simple local area networks use an intelligent central switching facility in a star configuration that resembles conventional telephone PBX technology. By using base-band directly on wires and without multiplexing or central switching, we occupy 100 percent of that medium's bandwidth. (Also known as the percentage bandwidth factor.)

When base-band signals are translated to radio or

optical frequencies, it becomes possible to pack more base-band channels into one single frequency, as shown in fig. 5. The higher the frequency, the more base-band channels can be transmitted.

Frequency division multiplexing, designated as the broadband approach to local area networks, can be further subdivided according to some interesting protocols, as shown in fig. 6.

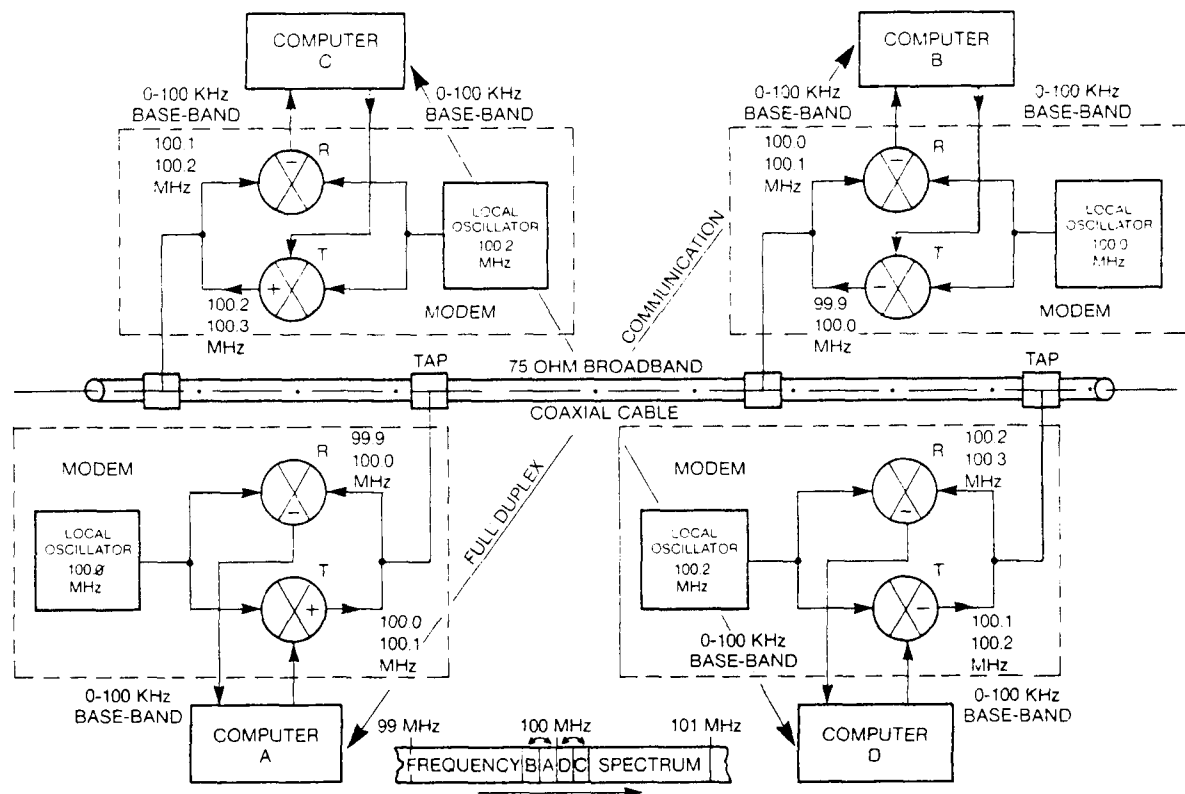


fig. 5. The concept of percentage bandwidth shows that the best medium utilization occurs when many base-bands are modulated on top of much higher frequencies as in frequency division multiplexing (FDM) techniques using radio-like processing.

listen while talking

In an effort to find better ways of utilizing the spectrum *without* switching and/or multiplexing new packet techniques using radio and coaxial cable networks have recently been developed and implemented. By borrowing ideas from real-life situations, designers have applied the characteristics of human interaction to communications between machines.

Imagine a business meeting in which several dynamic men and women exchange information and make decisions in one room. The process is rapid and contains several important elements common to all the speakers:

- A leading address to one or more participants precedes any conveyed message.

- A message is conveyed.
- An end remark is usually followed by an invitation to answer.

If two persons begin to speak simultaneously their messages "collide," and one or both stops talking and tries again later. (In earlier packet radio, neither party would have "known" that a collision had occurred until they noticed that an acknowledgement had not been received at the end of the transmission.)

This relatively simple concept is the basis for a type of local area networking known as *Ethernet*. Ethernet allows the transmitting station to listen in on the "ether" while transmitting a packet, in a method known as "listen while talking." This method is similar to the situation that occurred in the hypothetical business meeting described above. It allows for any

AHEAD OF THE REST WITH THE BEST FOR LESS

MICRODYNE

MSE

CALIFORNIA AMP

AVANTEK

CHAPARRAL

LUXOR

DEXCEL

MTI

PRODELIN

MAICOM

GENERAL INSTRUMENTS

STS

TOKI

DRAKE

JANEIL

satellite television
inc.

DEALER MEMBER OF
SPACE

1108 S. Main/P.O. Box 817/Pocatello, Idaho 83204(208) 232-1926

You benefit from Satellite Television's vast experience in TVRO and SMATV components distribution. We're the oldest Janeil master distributor in the U.S.A., and we're direct distributors for the country's leading antenna, receiver, LNA, actuator, and rotor manufacturers.

Call us first, you'll get:

FACTORY DIRECT
LOW PRICES

MOST ORDERS
SHIPPED WITHIN
24 HOURS

FULL FACTORY
WARRANTIES
NO MINIMUM
PURCHASE

✓ 203

CALL LONG DISTANCE ON 2 METERS

Only 10 watts drive will deliver 75 watts of RF power on 2M SSB, FM, or CW. It is biased Class AB for linear operation. The current drain is 8-9 amps at 13.6 Vdc. It comes in a well constructed, rugged case with an oversized heat sink to keep it cool. It has a sensitive C.O.R. circuitry, reliable SO-239 RF connectors, and an amplifier IN/OUT switch. The maximum power input is 15 watts.



Our products are backed by prompt factory service and technical assistance. To become familiar with our other fine products in the amateur radio market, call or write for our free product and small parts catalog.

Model 875
Kit \$109.95
Wired & Tested \$129.95

✓ 134



CCI Communication Concepts Inc.
2648 North Aragon Ave. • Dayton, Ohio 45420 • (513) 296-1411



R-T HV Mark II



LT.
HT

NEW, EASY-TO-USE DESIGN GET TRANSI-TRAP™ LIGHTNING PROTECTION

Protect your valuable equipment from antenna voltage surges caused by nearby lightning, high wind and static build-up. Keeps harmful ARC energy off equipment by safely shunting it to ground. Uses tested, field proven, and replaceable ARC-PLUG™ gas filled ceramic cartridge.

Model LT 200 watts @ 50Ω \$19.95
Model HT 2kw @ 50Ω \$24.95
Ruggedized Super Low Loss (.1dB @ 500 MHz)
Model R-T 200 watts @ 50Ω \$29.95
Model HV 2kw @ 50Ω \$32.95

See your local dealer or order direct. Pse. include \$2 for shipping and handling. MC and VISA accepted.

ALPHA DELTA COMMUNICATIONS

P.O. Box 571, Centerville, Ohio 45459
(513) 435-4772 ✓ 135

JRS Distributors

646 W. Market Street
York, PA 17404
(717) 854-8624

Friendly

Personalized Service

Full Line of
Amateur Radio Equipment.
Factory Authorized
Kenwood and ICOM dealer.
Call us today
Jim, K3JFL Jean K3OAU
Dale, KA3KOL ✓ 136

COMPUTER PROGRAMS FOR THE RADIO AMATEUR by Wayne Overbeck, N6NB, and Jim Steffen, KC6A



Here's the first source book of computer programs for the Radio Amateur. Besides covering computer basics, this book gives you programs that will help you log, determine sunrise/sunset times, track the Moon's path across the sky, use Greyline propagation and set up record systems for WAS, DXCC and VUCC, or any other award. You can either buy the book alone or you can buy the book with the programs already on disk. Take full advantage of your computer with this well written source book. ©1984, 1st edition, 327 pages.

□ HA-0657 Softbound \$16.95
□ HA-0657 with program \$29.95
specify computer (see list below)
□ Program disk alone \$19.95

Programs available for: Apple II (DOS and CP/M), IBM (DOS), TRS-80 Model I and Model III and Commodore C-64. Please mark your order with the program disk you want.

Please include \$2.50 shipping and handling.
Ham Radio's Bookstore
Greenville, NH 03048

✓ 134

collisions caused by another station that had decided to transmit to be immediately detected, which in turn causes the transmitter to cease transmission and restart at a later time. Ethernet can be used either at base-band over wire pairs and/or coaxial cables, or over channelized broad-band busses in CATV-like networks equipped with special modems as shown in fig. 7.

The concept was developed as a consequence of problems with simpler packet radio techniques that do not necessarily allow for the collision detection characteristic of Ethernet. These technologies evolved from the well-known ALOHA network. Developed at the University of Hawaii in 1970, the ALOHA system was essentially the first practical packet radio network, and covered the Hawaiian Islands, as shown in fig. 8.

The purpose of the ALOHNET was to provide inexpensive, statewide user-to-central computer communication for several hundred terminal users who were experiencing poor telephone modem connections at the time. Unlike previous networks, which used node-to-node communications, ALOHA network communication was accomplished in a radio broadcast mode, in which each station was heard and addressed by the central packet station known as the "Menehune", located in Honolulu, via two 100-kHz random-access channels at 407.35 MHz and 413.475 MHz. Although the system did not allow for direct user-to-user communications, information was nevertheless transmitted by transferring data to the central packet station and then forwarding it, after processing, to the destination user.

The packet transmission data rate was 9600 baud, with packets consisting of a 32-bit header, a 16-bit header parity check field, and up to 80 bytes of data followed by a 16-bit data parity check field. The maximum size packets were, therefore, 704 bits in length. Each took about 73 milliseconds to transmit; the entire network's propagation delay time was therefore, negligible in comparison to other systems. The random-access user-to-computer (407.350 MHz) channel allowed for packet headers containing user addresses to be identified by the Menehune central station. One natural consequence of the random nature of transmission was the probability of packet overlapping and collision. However, frequency division multiplexing was not considered necessary because of the burst nature of the computer traffic and the lack of additional radio channels. The collided packets were rejected by the Menehune station, and that fact was made known to the respective transmitting terminal by the absence of an acknowledgement signal on the computer-to-user return channel (413.475 MHz). This channel presented no random collision problem, since only the central processor's transmitter was broadcasting to all the other stations.

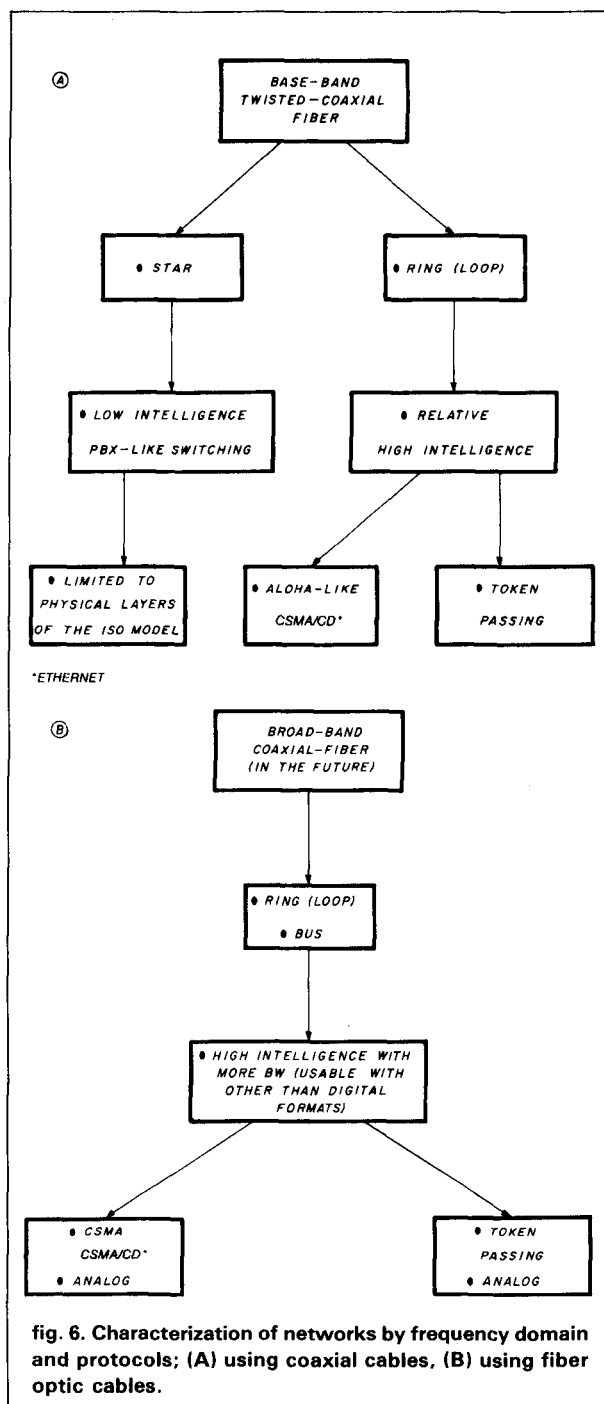


fig. 6. Characterization of networks by frequency domain and protocols; (A) using coaxial cables, (B) using fiber optic cables.

This scheme, known as pure ALOHA, presents some drawbacks as pointed out earlier; because the individual terminals have to wait until no acknowledgement is received, and then re-transmit the packet at random, with no guarantee that a collision will not occur again.

The relatively low throughput of pure ALOHA (see fig. 9 A and B) arises from the high practical probability of packet collision, which in turn is the result of

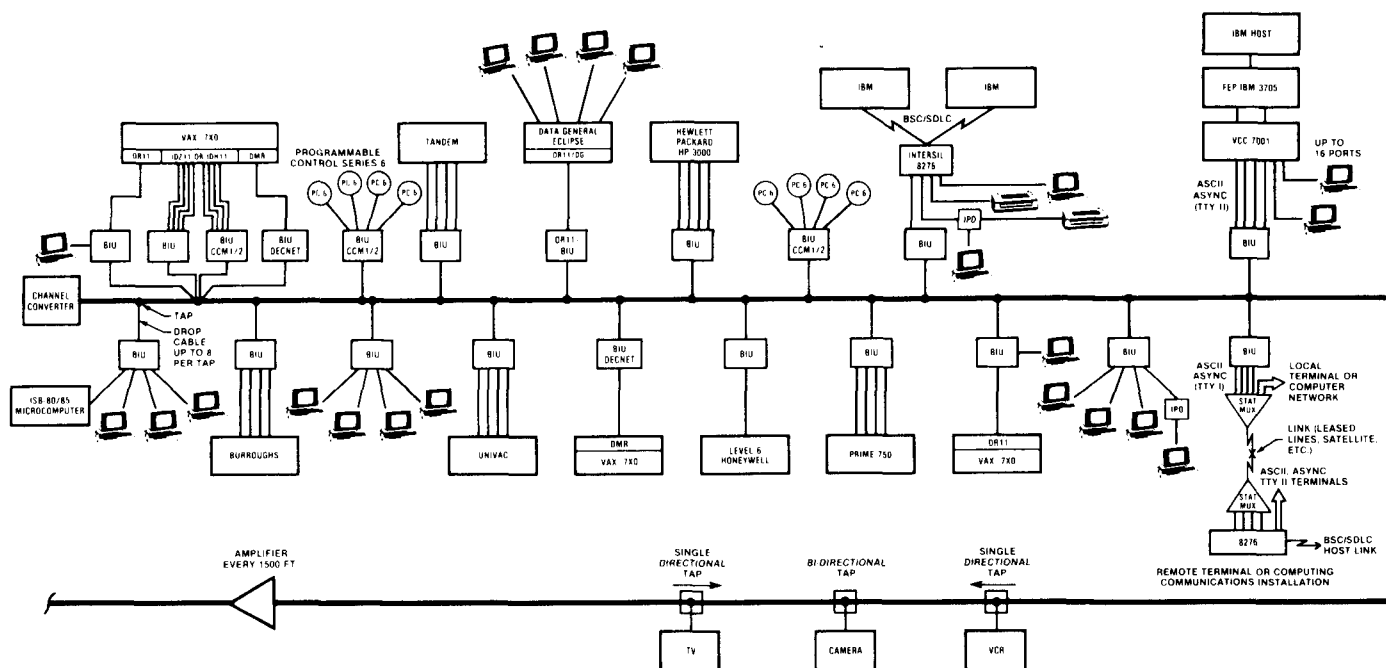


fig. 7. The GE-NET is an example of Ethernet implemented on a broad-band CATV-Network.

the total lack of discipline in transmissions from the terminals.

To correct the situation, various proposals were made to improve the bandwidth utilization. Among them were slotted ALOHA, which restricts and synchronizes terminal transmissions for better throughput and the various carrier sense multiple access (CSMA) techniques presently used.

The present AX.25 protocol used in Amateur packet-radio networks is superior to the ALOHA protocol because it listens before it transmits; however, the characteristic "listen while talk" feature of Ethernet is not available on these networks. The more advanced Ethernet concept was pioneered by the Xerox Corporation in November, 1978, as part of a proposed nationwide network known as the Xerox Telecommunications Network (XTEN).

satellites would provide the link

The overall XTEN approach required satellite communications to link together through shared earth stations located in all the major cities around the country. Microwave radio, and/or infrared fiber links were envisioned to connect the local users to the earth stations, and finally, individual buildings and/or campuses were to be connected through a 3-Mbit/s packet network.

In its modern form, Ethernet is a base-band local area network allowing a theoretical rate of 10-Mbit/s over coaxial cable. It can connect as many as 1024 stations over a span of 7600 feet. Each station is

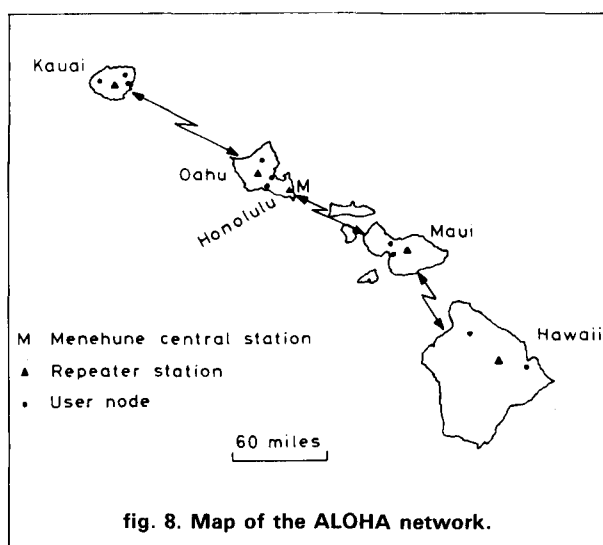
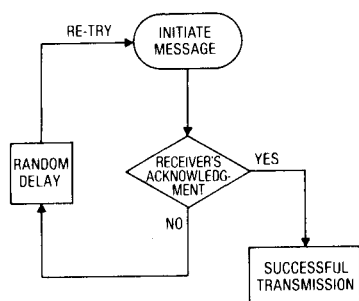


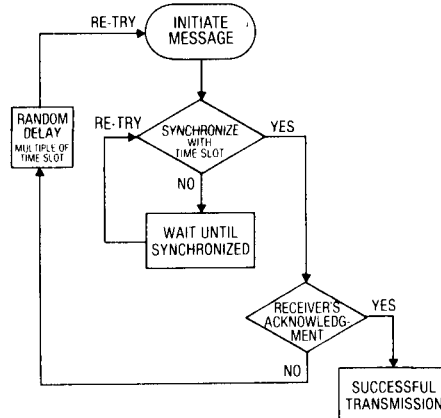
fig. 8. Map of the ALOHA network.

designated by a 48-bit code and collision detection (CSMA/CD) is accomplished through the previously described techniques. In spite of the many improvements since the ALOHA days, the opponents of Ethernet still maintain that when network traffic is especially heavy, real-time applications such as those on aircraft or in automated factories could fail to be completed within the limits of their prescribed times, resulting in long collision recovery time, and even the risk of catastrophic failure.

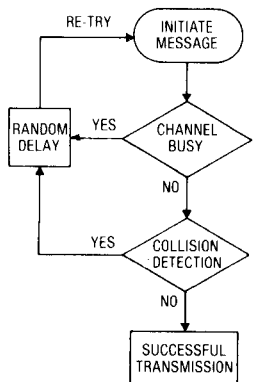
Consequently, new methods have been developed to provide more discipline in accessing networks. One



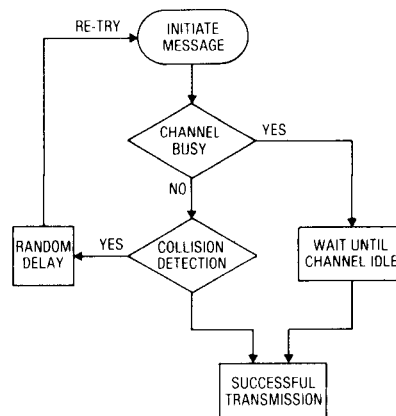
PURE ALOHA



SLOTTED ALOHA

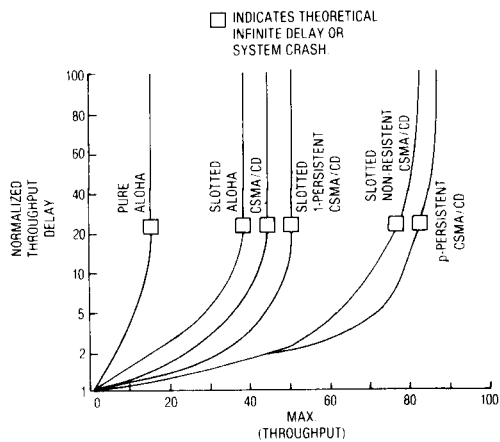


CSMA/CD = ETHERNET



1-PERSISTENT CSMA/CD

A



FOR α = NORMALIZED PROPAGATION DELAY = 0.01

SOURCE RUBIN, 1982

B

PROTOCOL	MAX. THROUGHPUT (%)
PURE ALOHA	18.4
SLOTTED ALOHA	36.8
CSMA/CD	40.0
1-PERSISTENT CSMA/CD	52.9
SLOTTED 1-p CSMA/CD	53.1
0.1-p CSMA/CD	79.1
NONPERSISTENT CSMA/CD	81.5
0.03-p CSMA/CD	82.7
SLOTTED NONPERSISTENT CSMA	85.7
IDEAL SCHEDULING	100

fig. 9. (A) Variations of the ALOHA concept, and their functional flow diagram, (B) system crash is indicated by the maximum throughput delay for the different methods shown.

such method is the newly introduced *token-passing* technique, which consists of passing an accessing token from terminal to terminal, which in turn provides a well-ordered method of accessing the network for the participating users. The relatively complicated error recovery algorithms of token-passing make this approach difficult to implement, however. (Most base-band, token-passing networks can also be implemented in broad-band.)

A compromise between the CSMA and *token-passing* is now being examined, with products to follow in the near future.

applying what we've learned

Shown in **fig. 10** is a radio transceiver with a built-in computer terminal; it could also be considered a computer terminal with a built-in radio transceiver. Behind its friendly look lies a packet radio network of unprecedented complexity.

Imagine a nationwide dispatching operation involving thousands of roving service or supply vans, with drivers. Obviously such an operation would require foolproof, effective communications and positive inventory control of all parts used in the field (with automatic reordering). A combination of radio paging, telephone dispatching, and paperwork would be necessary.

In such an application increased productivity and elimination of delays associated with the paperwork means improved communications. Equipped with this portable radio terminal, otherwise known as a PCX, a fleet can reliably access a distributed database network that keeps track of all inventories even as they are being continuously modified from the field by all other portable radio terminals. This — and dispatching and ordering functions as well — happens in real time, in all locations, and without the inevitable delays associated with paperwork.

These developments are expected to open new doors in professional and Amateur packet radio activities, with products such as hand-held transceivers expressively made for data networking applications. Networks using satellite packet gateways will allow electronic mail to be carried from one side of the world to the other, and facilitate the handling of emergency traffic on a worldwide scale.

what we can expect

Today's personal computer is a small first step in the eventual connection of diverse communication technologies in terms of interactive thinking of machines. This new science has been named *telematique* or *telecybernetics*.

Theoretically, the ideal local area network should allow any computer or office/factory device to communicate with any other device within its geographical



fig. 10. The portable radio data terminal (PCX) can provide interactive data communications with large data bases geographically dispersed. Thousands of such devices can modify inventories in real time, while roving around cities as part of area-wide packet networks operating in the 800-MHz business band. The local networks are in turn connected with a nationwide data network which provides updating of information to all other PCXs located elsewhere on the network. (Photo courtesy of Motorola Inc.)

boundaries. However, current local networks are limited in that they perform only limited functions in specific settings. This approach may or may not survive the present technological revolution. Such is the case with some inexpensive base-band systems that can work with only certain brands of computers. *The problem is essentially one of standardization.* The age of the throwaway computer is here; the average life time of a design appears not to exceed two years. And although the new machines are increasingly powerful, with built-in LAN capabilities, combining them into networks remains one of the most challenging tasks ever encountered.

To help minimize these problems, the International Organization for Standardization (ISO) introduced the Open System Interconnection (OSI) model in 1978, a concept for developing communications between dissimilar devices. The model has since been adopted by the IEEE and is now reflected in the IEEE-802 standard, as shown in **fig. 11**. Upon completion, this standard is expected to ensure compatibility between local area networks with only a minimum amount of work required of the user.

conclusion

Today's local area networks cannot be expected to provide communications between dissimilar devices without additional customized hardware and software interfaces. At the same time, standardization is not expected to resolve the fundamental incompatibility of computers that use different operating systems, languages, and syntaxes. Technical experts seem in

RECEIVE WEATHER CHARTS IN YOUR HOME!

SPECIAL!
While Supply Lasts
UNIDEN CR-2021
HF General Coverage
Receiver only \$95
plus \$5 s/h When
purchased with Weather
Chart Recorder Kit



You can DX and receive weather charts from around the world.

Tune in on free, worldwide government weather services. Some transmitting sites even send weather satellite cloud cover pictures!

You've heard those curious facsimile sounds while tuning through the bands—now capture these signals on paper!

Assemble ALDEN's new radiofacsimile Weather Chart Recorder Kit, hook it up to a stable HF general-coverage receiver, and you're on your way to enjoying a new hobby activity with many practical applications. Amateurs, pilots, and educators can now receive the same graphic printouts of high-quality, detailed weather charts and oceanographic data used by commercial and government personnel.

Easy to assemble—Backed by the ALDEN name.

For over 40 years, ALDEN has led the way in the design and manufacture of the finest weather facsimile recording systems delivered to customers worldwide. This recorder kit includes pre-assembled and tested circuit boards and mechanical assemblies. All fit together in a durable, attractive case that adds the finishing professional touch.

Buy in kit form and save \$1,000!

You do the final assembly. You save \$1,000. Complete, easy-to-follow illustrated instructions for assembly, checkout, and operation. And ALDEN backs these kits with a one-year limited warranty on all parts.

Easy to order.

Only \$995 for the complete

ALDEN Weather Chart Recorder Kit.

To order, fill out and mail the coupon below. For cash orders enclose a check or money order for \$995. Add \$5 for shipping and handling in the U.S. and Canada, plus applicable sales tax for CA, CO, CT, IA, MA, NY, WI. (Export price is \$1250 F.O.B. Westborough, MA. Specify 50 or 60 Hz.) To use your MasterCard or Visa by phone, call (617) 366-8851.

ALDEN ELECTRONICS

Washington Street, Westborough, MA 01581

NAME: _____

CALLSIGN: _____

ADDRESS: _____

CITY: _____ STATE: _____ ZIP: _____

☐ I've enclosed a check or money order for \$995.00 and \$5.00 for shipping and handling, plus applicable sales tax.

☐ Charge to: ☐ MasterCard ☐ Visa ☐ VISA

ACCOUNT # (ALL DIGITS)

--	--	--	--	--	--	--	--	--	--	--	--	--	--	--	--	--	--	--	--

EXPIRATION DATE

		-		
--	--	---	--	--

SIGNATURE REQUIRED
IF USING CREDIT CARD

AT LAST A MINIATURE BASE STATION AT A MINIATURE PRICE...

The MX-15 is a 15-meter band SSB/CW hand-held transceiver. It measures only 1½" (D) x 2½" (H) and offers 300mW for SSB and CW operation. A single-conversion receiver employing a MOS/FET front-end offers clear and sensitive reception. As a base or portable station, the MX-15 offers an unlimited challenge in QRP operation. Additional accessories are available to extend your operation.

The MX-15 comes with full 90 day warranty and is available from factory direct or **HENRY RADIO (800) 421-6631**



\$129.95

VISA

ACCESSORIES SUPPLIED

- Standard Frequency crystal of your choice
- 6 pc. AAA Batteries
- DC Cable
- Instruction sheet

ACCESSORIES AVAILABLE

- | | |
|---|----------------|
| ■ MX Channel crystal.... (Standard Frequency) | \$7.00 |
| ■ MS-1 External Speaker-Microphone | \$23.50 |
| ■ Noise Blanking Kit | \$6.50 |
| ■ NB-1 Side Tone Kit | \$11.50 |
| ■ SP-15 Telescoping antenna | \$19.50 |
| ■ 2M2 DC-DC Converter set | \$17.50 |
| ■ PR-1 Mobile Rack Kit | \$23.50 |
| ■ VX-15 External VXO (one crystal supplied) | \$53.50 |
| ■ PL-15 10W Linear amplifier | \$89.50 |

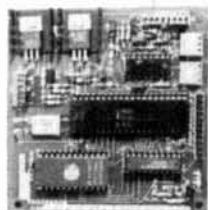


Photo shown MX-15, VX-15, PL-15, SP-15, MS-1 and PR-1

ACE communications, inc.

22511 ASPAN ST. LAKE FOREST, CA 92630 (714) 581-4900
TELEX 655 306

MICROCOMPUTER REPEATER CONTROL



\$119

139

Introducing the MICRO REPEATER CONTROLLER RPT-2A, a new concept in LOW COST, EASY TO INTERFACE, microcomputer repeater control. Replace old logic boards with a state of the art microcomputer that adds NEW FEATURES: HIGH RELIABILITY, LOW POWER, SMALL SIZE, and FULL DOCUMENTATION to your system. Direct interface (drop in) with most repeaters. Detailed interface information included. Original MICRO REPEATER CONTROL article featured in QST Dec. 1983.

- Two CW ID Messages
- Time Out Timer
- Pre-Timeout Warning MSG
- Post Timeout CW MSG
- Courtesy Beep
- Auxiliary Inputs
- Reconfigurable COR Input
- High Current PTT Interface
- Sine Wave Tone Generator
- Low Power 9-15 VDC @ 200 ma
- Size 3.5" x 3.5"
- All Connectors Included

RPT-2A Kit Only **\$119** plus \$3.00 shipping

PROCESSOR CONCEPTS

P.O. BOX 185
FORT ATKINSON, WI 53538
(414) 563-4962 7pm-10pm evenings



CALL OR WRITE FOR FREE CATALOG AND SPECIFICATIONS

DRAKE R-4/T-4X OWNERS AVOID OBSOLESCENCE

PLUG-IN SOLID STATE TUBES!
Get state-of-the-art performance.
Most types available

**INSTALL KITS TO UPGRADE
PERFORMANCE!**

- BASIC Improvement
- Audio Bandpass Filter
- Audio IC Amplifier

TUBES \$23 PPD KITS \$25 PPD

OVERSEAS AIR \$7

SARTORI ASSOCIATES, W5DA
BOX 832085
RICHARDSON, TX 75083
214-494-3093

140

SYNTHESIZED SIGNAL GENERATOR



MADE IN
USA

**MODEL
SG-100E
\$399.95**
plus shipping

- Covers 100 MHz to 185 MHz in 1 kHz steps with thumbwheel dial
- Accuracy +/− 1 part per 10 million at all frequencies
- Internal FM adjustable from 0 to 100 kHz at a 1 kHz rate
- External FM input accepts tones or voice
- Spurs and noise at least 60 dB below carrier
- Output adjustable from 5-500 mV at 50 Ohms
- Operates on 12 Vdc @ ½ Amp
- Available for immediate delivery • \$399.95 plus shipping
- Add-on accessories available to extend freq range, add infinite resolution, AM, and a precision 120 dB attenuator
- Call or write for details • Phone in your order for fast COD shipment.

141

VANGUARD LABS

196-23 Jamaica Ave., Hollis, NY 11423
Phone: (212) 468-2720

"TWO-TWO-FIVE"

- ★ Synthesized Voice Doppler Direction Finding
- ★ VHF and UHF Coverage
- ★ RS232C Computer Interface



- ★ No Receiver Mods
- ★ Mobile or Fixed
- ★ 12 VDC Operation
- ★ Digital and Circular Display
- ★ 90 Day Warranty

New Technology (patent pending) converts any VHF or UHF FM receiver into an advanced Doppler shift radio direction finder. Simply plug into receiver's antenna and external speaker jacks. Uses four omnidirectional antennas. Low noise, high sensitivity for weak signal detection. Call or write for full details and prices.

DOPPLER SYSTEMS, INC. 5540 E. Charter Oak, (602) 998-1151
Scottsdale, AZ 85254

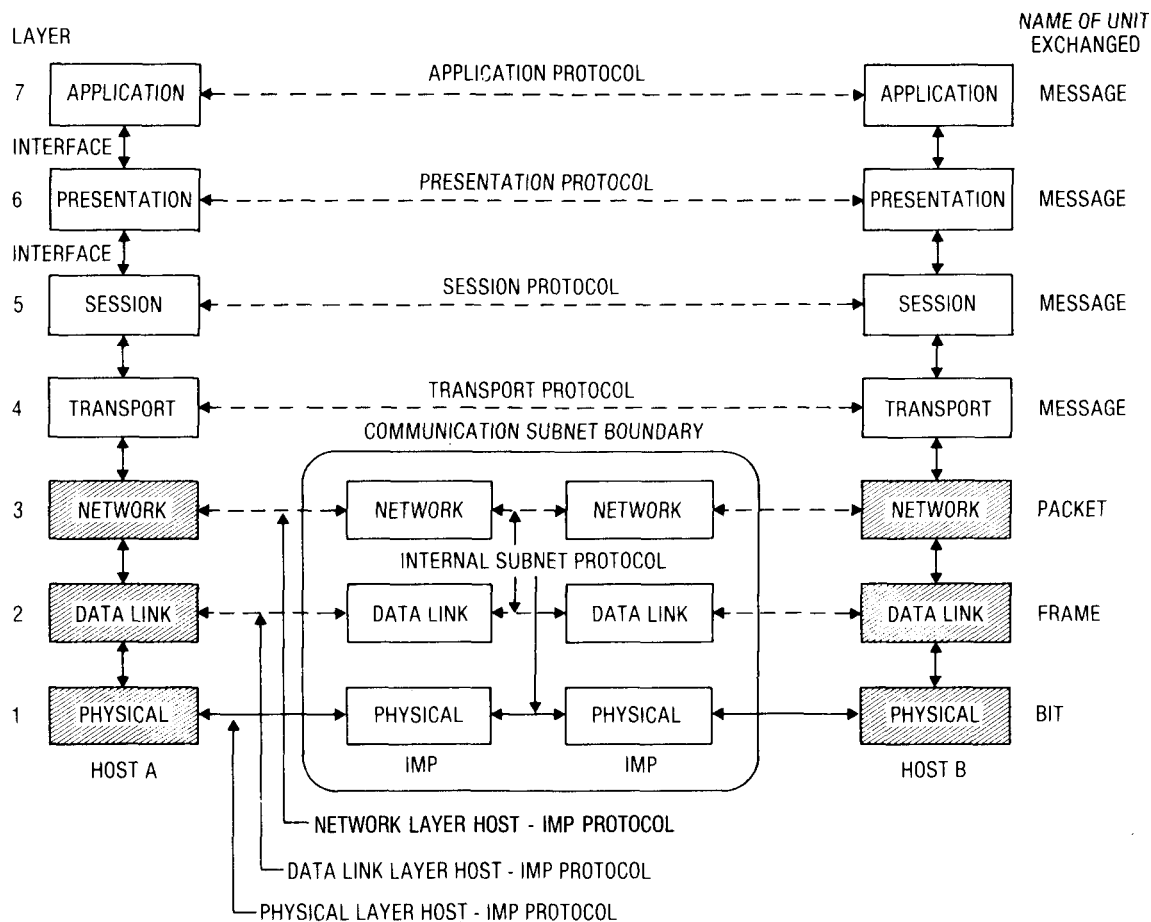


fig. 11. The seven-layer ISO OSI model has been adopted by IEEE's Project 802 Committee and a set of protocols is now available for the bottom layers.

doubt as to whether the processing imposed by the protocols will still permit real-time applications such as digitized voice or compressed video-conferencing — services that have been part of the promised land of LAN. The question still remains whether or not electronic mail belongs within the ISO OSI structure, outside of it as a separate service, or somewhere in between. It is well known that few true distributed database products are available today. Not to be confused with file sharing, these systems involve similar databases that are geographically dispersed. The intent is to provide each LAN containing such a database with updated information in real time. The problems associated with finding, updating, and verifying this information at several locations calls for traffic-intensive communications not yet compatible with the ISO OSI model because of the current lack of "intelligent" software.

The hardware-oriented issues with packet communications seem small when compared with the

above issues; progress remains to be made in frequency division multiplexing technologies required for broad-band optical communications and in the design of fiber-optic power splitters (the optical equivalent of RF-power splitters). At light frequencies the process becomes impractical because of temperature instabilities. Consequently, achieving broad-band communications over fiber optics remains a laboratory experiment. Fibers are usually used in base-band modes; applications using Bragg technology are possible, however, in real time broadband-to-base-band converters (patent pending by the author and Honeywell, Inc.).

acknowledgements

My thanks go to Pat Snyder, WA0TTW, of the University of Minnesota Computer Center, and board member of the Tucson Amateur Packet Radio Corporation, for carefully reviewing this work, and the Honeywell Corporation, which provided time to make it possible.

LIMITED ANTENNA SPACE? B & W OFFERS SIX SOLUTIONS!



Barker & Williamson offers six new multiband trapped dipoles made to fit in less space than conventional antennas. You may not have room for that dream antenna farm, but no longer need limit your operating to one or two bands. These new antennas provide low SWR on **every** band making a great companion for today's solid state rigs.

- Direct feed with 52 OHM Coax
- 1 KW CW, 2 KW P.E.P. SSB
- SO-239 Termination

MODEL	BANDS	LENGTH	PRICE
AS - 160	160, 80, 40, 20 METERS	137 Ft.	\$129.00
AXS - 160	160, 30 METERS	96 Ft.	99.00
AS - 80	80, 40, 20 METERS	78 Ft.	99.00
AXS - 80	80, 40, 15 METERS	64 Ft.	99.00
AS - 40	40, 20, 15, 10 METERS	40 Ft.	129.00
AS - 20	20, 15, 10 METERS	23 Ft.	99.00

ADD \$2.00 SHIPPING & HANDLING



ALL OUR PRODUCTS MADE IN USA
BARKER & WILLIAMSON

Quality Communication Products Since 1932
At your Distributors. Write or Call
10 Canal Street, Bristol, PA 19007
(215) 788-5581



bibliography

Allan, R., "Local Networks: Fiber Optics Gains Momentum," *Electronic Design*, June 23, 1984.

Costlow, T., "Broadband LAN Based On IEEE-801 Token Passing Emerges For Factory Use," *Electronic Design*, March 31, 1983.

Cypser, R.J., *Communications Architecture For Distributed System*, Addison-Wesley.

Doll, Dixon, R., *Data Communications*, Wiley-Interscience.

Drentea, Cornell, WB3ZJO, "The Bragg Cell Receiver," *ham radio*, February, 1983, page 42.

Drentea, Cornell, "Local Area Networks, A Technology Review," *Report 82-06*, and "LAN Technologies Today and Tomorrow," *Report 83-03*, Honeywell, Inc.

Drentea, Cornell, *Radio Communications Receivers*, Tab Books, Inc., 1982.

Eisenhard, Bruce, "Omninet: A Low Cost CSMA Network For Microcomputers," *COM-PCON*, February, 1982.

Feigenbaum, Edward and McCorduck, Pamela, *The Fifth Generation*, Addison-Wesley.

Feldman, R., "PNX Makes Debut," *Management Information Systems Week*, Wednesday, April 20, 1983.

Frank, Dr. H., "Broadband Versus Baseband Local Area Networks," *Telecommunications*, March, 1983.

Giuliana, Vincent E., "The Mechanization of Work," *Scientific American*, September, 1982.

Lawrence, Victor B.; LoCicero, Joseph L.; and Milstein, Laurance B., *IEEE Communications Society's Tutorials In Modern Communications*, Computer Science Press.

Morrison, Margaret and Dan, "Packet Radio," *ham radio*, July, 1983.

Nussbaum, Bruce, *The World After Oil*, Simon and Schuster.

Rosner, Roy D., *Packet Switching*, Lifetime Publication.

Rubin, Izhak, "Modern Telecommunications Networking," *UCLA*, Los Angeles, California, 1982.

Sharma, Roshan Lal; de Sousa, Paulo, J.T.; and Ingle, Ashok D., *Network Systems*, Van Nostrand Reinhold.

Stremier, Ferrel G., *Introduction to Communication Systems*, Addison-Wesley, Inc.

Tanenbaum, Andrew S., *Computer Networks*, Prentice Hall.

Thurber, Kenneth J.; and Freeman, Harvey A., "The Many Faces Of Local Networking," *Data Communications*, December, 1981.

Thurber, Kenneth J.; and Freeman, Henry A., "Architecture Considerations for Local Computer Networks," *Proceedings, 1st International Conference on Distributed Computing Systems*, 1979, pages 131-142.

Guidelines for the Selection of Local Area Computer Networks, National Bureau of Standards, Washington, D.C. 20234.

"Open Systems Interconnection With X.25 and Other Related Protocols Proceedings," Toronto, Canada, 1983.

Reference Data For Radio Engineers, Howard W. Sams Co., Inc.

ham radio

Hatry Electronics

IS
Your



ICOM



NYE VIKING

UNADILLA/REYCO



DAIWA

Larsen

VIBROPLEX CO.

MFJ

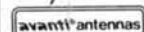
SAXTON PRODUCTS, INC.



J. W. MILLER

Headquarters!

antenna specialists



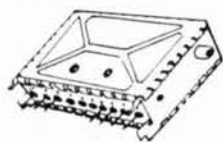
STORE HOURS
M-F 8:30-5:00
Sat 8:30-12:30
Sun Closed

✓ 142

Hatry Electronics

The Elect in Electronics

500 LEDYARD STREET
HARTFORD, CONN. 06114
Phone 203-527-1881



AMNEC EPU 202
UHF VARACTOR TUNER
REC. CHANNELS: 14 - 83
ANTENNA INPUT: 75 Ohm
\$12.95 EACH
\$11.50 EACH
100 & OVER



24 DB GAIN UHF/VHF/FM
ANTENNA/LINE AMPLIFIER
AUV-724

75 Ohm in and out ✓ 143
\$19.50 EACH 3/\$17.50 EACH

Accessory
Specialties

P.O. BOX 486 HAWTHORNE, CA 90250
TELEPHONE (213) 324-1973

WE ACCEPT MONEY ORDER, VISA, MASTERCARD
PERSONAL CHECK ORDERS HELD 30 DAYS. NO COD

SHIPPED UPS

ADD \$3.50 for Shipping & Handling, CA Residents ADD 6% TAX